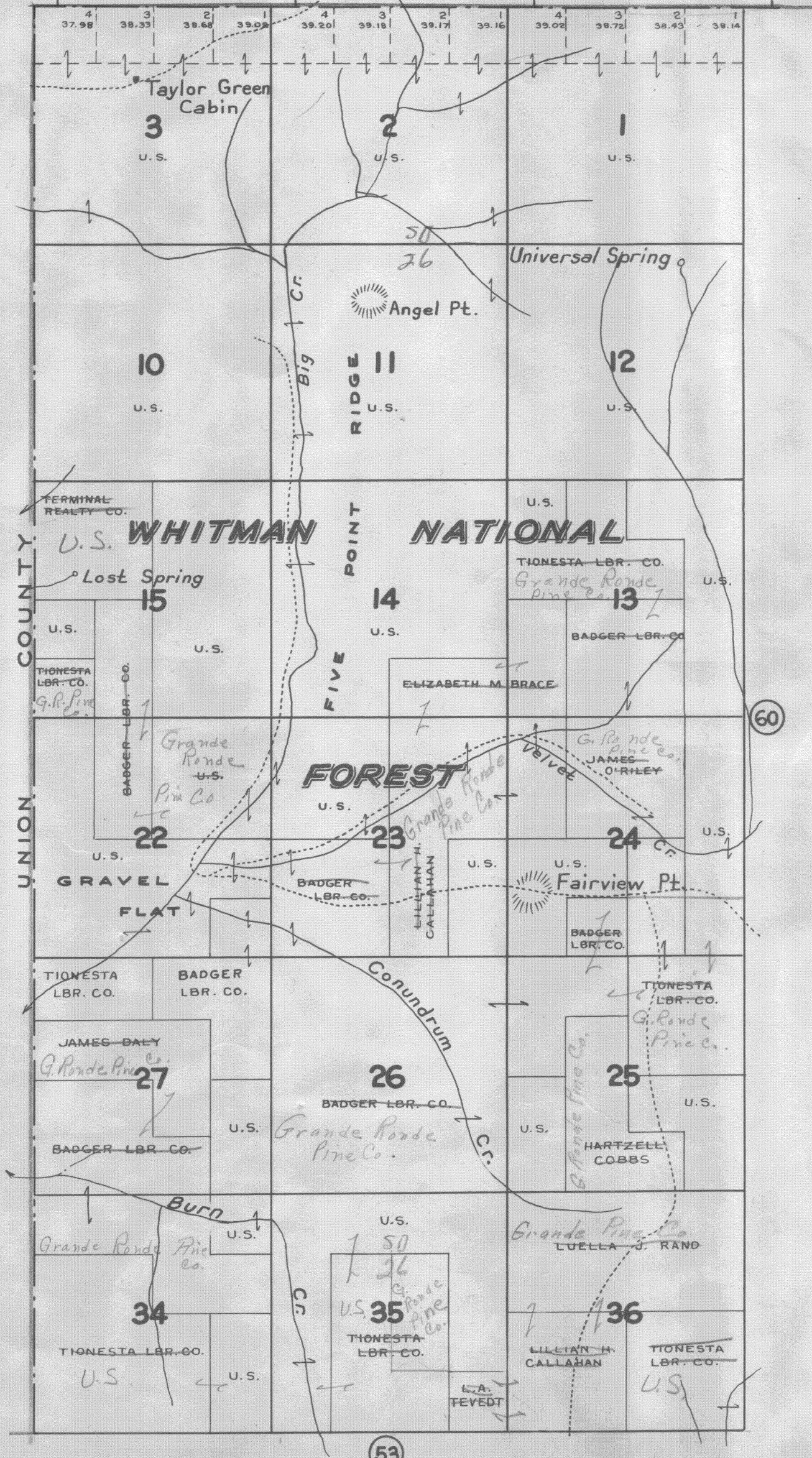


TOWNSHIP 6 S., RANGE 42 E.W. M. BAKER COUNTY, OREGON

SCALE 2 IN. = 1 MILE
DATED 1933

CHAS. F. METSKER, CIVIL ENGINEER
215 COMMERCE BLDG., PORTLAND, OREGON
930 1/2 PACIFIC AVE., TACOMA, WASHINGTON



- LEGEND—
- PAVED ROADS
 - STATE HIGHWAYS
 - GRAVELED ROADS
 - DIRT ROADS
 - INFERIOR ROADS
 - RAILROADS
 - TRAILS
 - INTERMITTENT CREEKS
 - SCHOOLS